

Oregon Shakespeare Festival

(Note: This is only a sample tour)

The **Oregon Shakespeare Festival (OSF)** is a regional repertory theatre in Ashland, Oregon. Founded in 1935, the Tony Award-winning Festival is among the oldest and largest professional non-profit theatres in the nation, producing eleven plays on three stages during a season that lasts from February to October, plus numerous ancillary activities, and undertakes an extensive theatre education program. It still continues on today known with a reputation for quality productions. Four to five of the plays produced each year are by **William Shakespeare**, who provides the inspiration for classic and contemporary plays in repertory reflecting the diversity of American culture.

Day 1: Depart by coach for the Oregon Shakespeare Festival in Ashland. As you travel through Washington and Oregon look out your coach windows to appreciate the natural beauty of these Western states. Upon arrival check into your hotel.

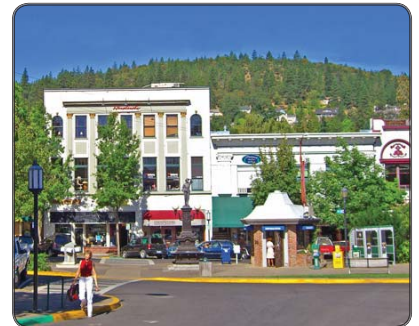
Day 2: This morning enjoy **Ashland's** natural surroundings. In addition to its many cultural offerings, Ashland has many forms of recreation. Perhaps you may wish to visit Lithia Park, a National Historic Site. The park is 100 acres in size, dense with mature trees and beautiful trails for some nature hikes or bike rides. The park also includes a playground, tennis courts, a Japanese garden, picnic areas, two duck ponds and two fountains of lithia mineral water, which everyone can taste of the effervescent waters. Meet in front of the Thomas Theatre for your **prologue** presented by a company member. This is especially valuable for plays with challenging themes or complex language such as Shakespeare. The prologue introduces the characters, themes, language and other background info. Attend your **matinee performance**. After your show, you may wish to shop in some of the quaint shops that line Ashland's charming streets. After dinner at a local restaurant, attend your **evening prologue and show**.

Day 3: Meet your guide this morning for your **backstage walking tour**. The tour explores the history, design and technology of repertory and includes indoor and outdoor locations. After lunch meet for your prologue and matinee performance. Later return to your hotel to relax or enjoy the ambiance of Ashland until dinner at a local restaurant and your evening prologue and show.

Day 4: Start your day with a relaxing breakfast at the hotel and then depart for Seattle. En route, stop at the **Oregon Vortex experience**. This is a glimpse of a strange world where the improbable is the commonplace and everyday physical facts are reversed. It is an area of naturally occurring visual and perceptual phenomena, which can be captured on film. No matter your education or profession you will find a challenge to all your accepted theories. Then, continue on to Seattle. Relax in the hotel enjoying the amenities provided.

Day 5: Start your day with a relaxing breakfast at the hotel and then depart for Seattle. En route, stop at the **Oregon Vortex experience**. This is a glimpse of a strange world where the improbable is the commonplace and everyday physical facts are reversed. It is an area of naturally occurring visual and perceptual phenomena, which can be captured on film. No matter your education or profession you will find a challenge to all your accepted theories. Then, continue on to Seattle. Relax in the hotel enjoying the amenities provided.

Day 6: After breakfast enjoy some of Seattle offerings. You may choose to head to **Pike Place Market**, internationally recognized as America's premier farmers' market and is home to nearly 200 year-round commercial businesses; 190 craftspeople and 120 farmers who rent table space by the day; 240 street performers and musicians; and 300 apartment units. "The Market," attracts 10 million visitors a year, making it one of Washington's most frequently visited destinations.



Or perhaps you may prefer a guided walking tour beneath **Seattle's** sidewalks and streets. Roam the subterranean passages that once were the main roadways and first-floor storefronts of old downtown Seattle.

Another option is the **Experience Music Project**, a one-of-a-kind music museum that encourages visitors of all ages and backgrounds to experience the power and joy of music in its many forms. EMP's collection includes more than 80,000 artifacts that helped shape music history, including musical instruments, an extensive recorded sound archive, film, photographs, and fanzines from around the world, stage costumes, handwritten song lyrics and rare song sheets. The building itself is interesting too! The exterior consists of stainless steel and painted aluminum shingles, each individually cut and shaped. The stainless steel has three finishes: mirrored purple, lightly brushed silver, and bead-blasted gold and was inspired by several guitar pieces which were fit together as building blocks for the early model design.

Later today you will cross the border back into Canada.

TOUR INCLUSIONS

- Return coach transfer Vancouver - Ashland
- Coach available during the days in Ashland
- 4 nights accommodation
 - o Students in triples and quads
 - o Chaperones in double room
- 4 Breakfasts daily
- 2 Dinners as shown
- 1 Backstage tour
- 4 Prologue sessions
- 4 shows
- Oregon Vortex Experience

